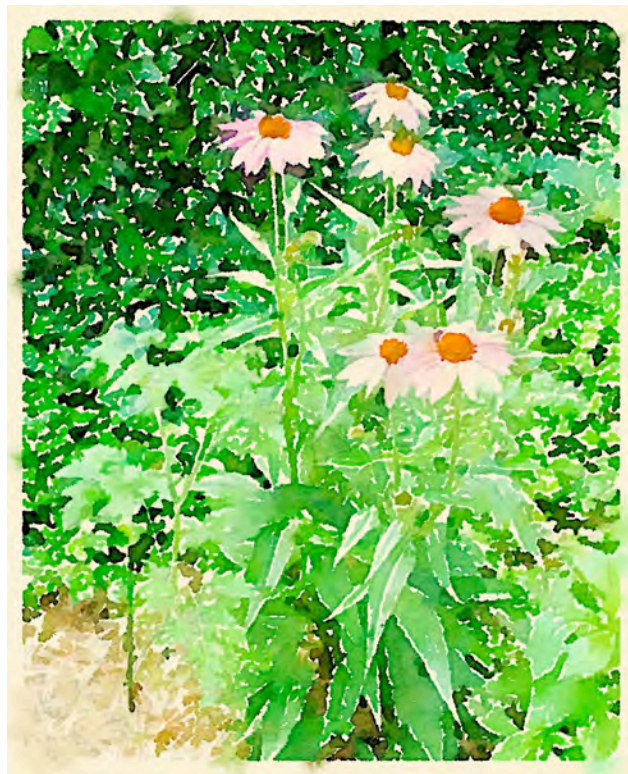


# *Sometimes Dreams Come True*

*Words and Music by*  
DON GNECCO



# Sometimes Dreams Come True

Words and Music by  
DON GNECCO

E $\flat$  Gm A $\flat$  B $\flat$  E $\flat$

Gm A $\flat$  B $\flat$ <sup>9</sup> E $\flat$  Gm

All through my life I hoped I'd  
When I first met you — I  
The years we've had togeth - er

A $\flat$  B $\flat$  sus<sup>4th</sup> / B $\flat$  E $\flat$  Gm

find some-one like you.  
tried to catch your eye.  
real - ly have been kind.

You've helped me see my - self a -  
It did - n't work, I don't know  
No bet - ter part - ner would I

B $\flat$  sus<sup>4th</sup> B $\flat$  Cm B $\flat$  E $\flat$

new.  
why.  
find.

But I still be - lieve some-times dreams come

A $\flat$  Cm B $\flat$  Cm Gm

true. When the chips are down You know what to say.

A $\flat$  E $\flat$  Cm Fm B $\flat$  sus<sup>4th</sup> / B $\flat$  C/C<sup>7</sup>

When I can't see where to go. You help me find the way.

F Am B $\flat$  C $\text{sus}^{\text{4th}}$ /C F

I've al-ways known that there is some-one up a - bove. Who watch-es

Am C $\text{sus}^{\text{4th}}$  C Dm C

o - ver me with love. But I still be - lieve

F B $\flat$  Dm C Dm

some-times dreams come true. When the chips are down. You know what to

Am B $\flat$  F Dm Gm C $\text{sus}^{\text{4th}}$ /C

say. When I can't see where to go, You show me the way.

Dm C Dm Am B $\flat$

When I see the best in ev-'ry thing I do, when I be-lieve with

F Am Gm C F F Am F $^{\text{9}}$

all my heart I can make my dreams come true.