

When the Shadows Turn to Night

Words and Music by
DonGnecco

8va Dm Gm Dm Gm Dm Eb



F7 Bb Dm Eb F Bb9 mp



When you feel your heart is break- ing —, When you

Dm Eb Dm Eb F Dm Gm Eb



can- not sleep at night, Just be still and close your eyes. Some- thing

F Dm Gm Eb D7 Gm



makes you re- al- ize just how much you need a friend —, When the

Dm Eb F Bb9 Dm Eb F



Shad- ows Turn to Night —. When the cra- zy world a- round you

Bb9 *mp* Dm Eb Dm Eb F Dm



Leaves you sad and feel- ing scared; 'Though you feel you'll fall a-

Gm Eb F Dm Gm Eb *f* D7 Gm



part, You may find a lov- ing heart. And you'll long to have her near

Dm Eb Bb(sus4th) Bb Eb *f* D7



When the Shad- ows Turn to Night. 'Though you can't a-

Gm Eb *mp* F7 Dm Eb D7



void the pain, know that you'll find love a- gain. Some- how things will

Gm Dm Gm *f* Dm Gm



be all right when the day- light fades, and the dark- ness falls

Dm Eb F Bb(sus4th) Bb G C *f*



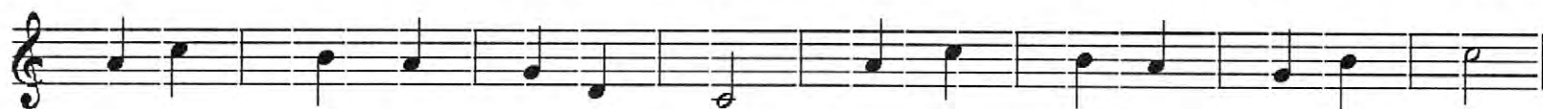
When the Shad- ows Turn to Night. When you

Em F G C9 *mp* Em F Em



don't know who to turn to, When you need some- one to care,

F G Em Am F G Em Am



Just turn 'round, I'm at your side. When you think that love has died

F E7 Am Em F G



know that I am stand- ing near When the Shad- ows Turn to Night

C9 Em F G C9 mp Em



When your can- dle flick- ers wild- ly When you think you'll

F Em F G Em Am F G



lose your light, Close your eyes and I'll be there. Know that I will

Em Am F E7 Am Em F



al- ways care. I am here at your side When the Shad- ows Turn to

C(sus4th) C F E7 Am F G7



Night Instrumental

Em F E7 Am Em Am



When the day- light fades and the

Em Am Em F G C(sus4th) C *mf* **3/4** *mf* —

dark- ness falls __, When the Shad- ows Turn to Night __.

Em Am Em Am Em F G *mf*

C(sus4th) C